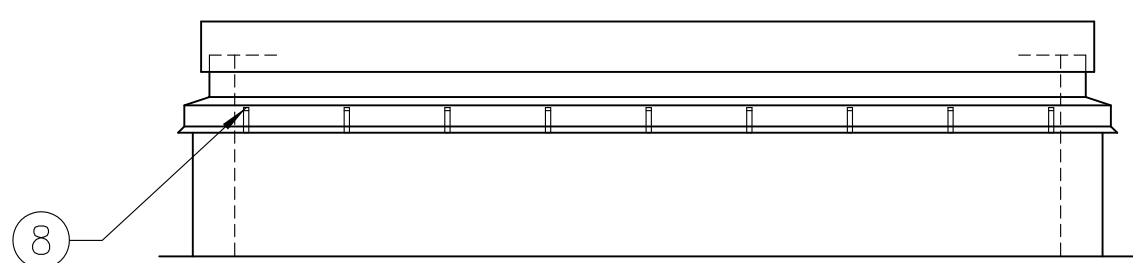
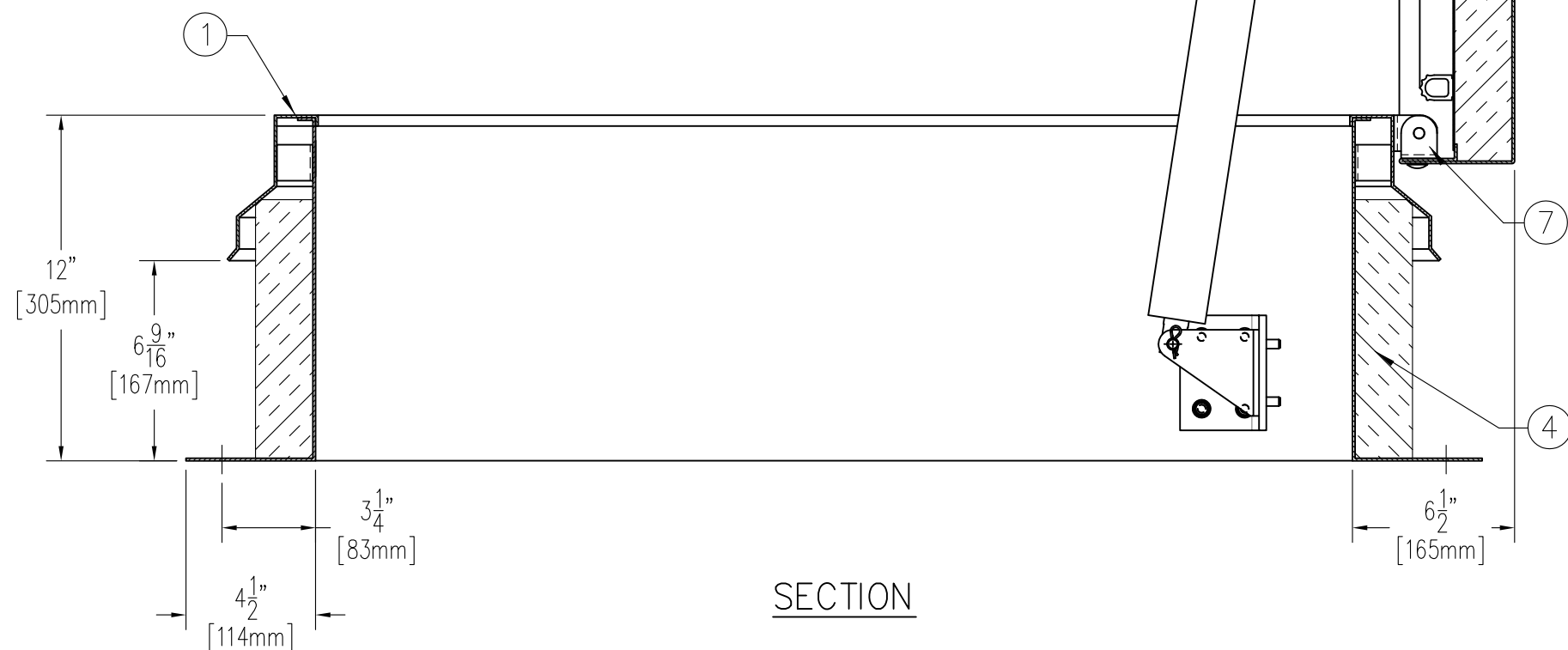


ANCHOR HOLE LAYOUT



MOTOR OPERATOR:
-24VDC ACTUATORS WITH OPEN CLOSE OPERATION

ELECTRICAL HOOK UP BY OTHERS, IF THE VOLTAGE IS OTHER THAN SPECIFIED PLEASE ADVISE



SECTION

SPECIFICATIONS

1. CURB W/INTEGRAL CAPFLASHING- 11 GA. ALUMINIUM (CORNERS FULLY WELDED)
2. COVER - 11 GA. ALUMINIUM
3. COVER LINER - 18 GA. ALUMINIUM
4. 2" [50MM] POLYISOCYANURATE CURB INSULATION
5. 2" [50MM] POLYISOCYANURATE COVER INSULATION
6. EPDM GASKET (ALL AROUND COVER)
7. PINTLE HINGE - STAINLESS STEEL TYPE 316
8. BILCLIP® FLASHING SYSTEM
9. JUNCTION BOX
10. ACTUATOR - 24VDC W/ OPEN CLOSE OPERATION

SHOP FINISH

ALUMINIUM: MILL FINISH
HARDWARE: CORROSION RESISTANT (UNLESS OTHERWISE SPECIFIED)

NOTES:

1. THIS PRODUCT MAY BE INSTALLED ON EITHER A FLAT OR SLOPING ROOF. WHEN INSTALLED ON A SLOPE, THE HINGE SIDE MUST RUN PARALLEL WITH THE SLOPE. IF SLOPE EXCEEDS 30°, ADVISE FACTORY FOR MODIFICATION.
2. FULL SPECIFICATIONS ARE AVAILABLE ON WEBSITE: www.bilco.com

CUSTOMER

P.O. NO.

JOB

SALES REP.

Bilco® Manufacturers of Doors for Special Services
THE BILCO COMPANY
New Haven, Connecticut 06505

**SINGLE LEAF ROOF VENTILATOR
TYPE RV-50RMA**

QTY	TYPE	SIZE
		WIDTH x LENGTH
<input type="text"/>	RV-50RMA	x _____ HINGE SIDE

Web Site: www.bilco.com

THIS DRAWING IS THE PROPERTY OF THE BILCO COMPANY AND INCORPORATES INFORMATION WHICH IS PROPRIETARY. PUBLICATION AND/OR PUBLIC DISTRIBUTION IN WHOLE OR IN PART IS EXPRESSLY PROHIBITED WITHOUT THE PRIOR WRITTEN CONSENT OF THE BILCO COMPANY. THE INFORMATION CONTAINED HEREIN REMAINS THE PROPERTY OF THE BILCO COMPANY. ALL RIGHTS RESERVED.